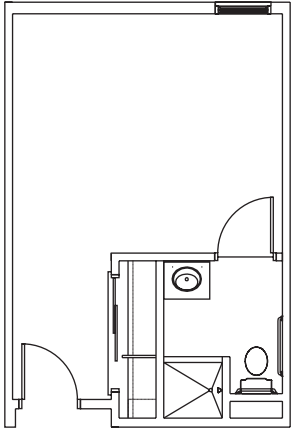
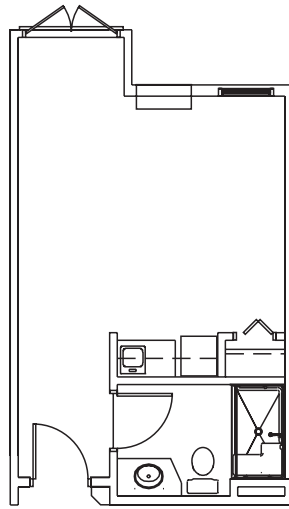


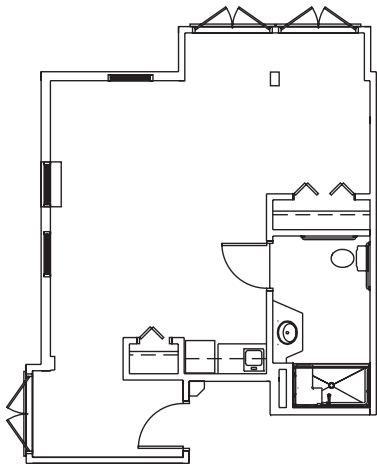
ASSISTED LIVING | SUITES



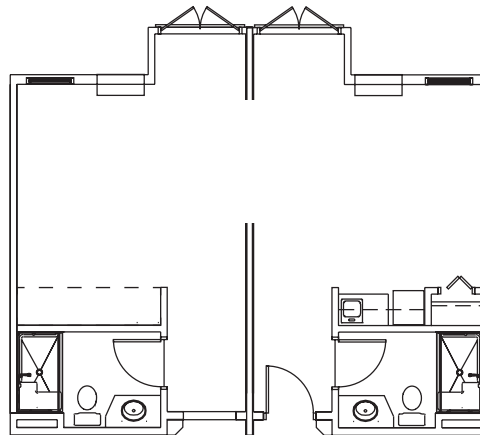
STUDIO I
310 SQ FT



STUDIO II
329 SQ FT



STUDIO DELUXE
469 SQ FT



ONE BEDROOM
658 SQ FT



B

BRANDYWINE

FENWICK ISLAND
ASSISTED LIVING AND MEMORY CARE

2111 ARRINGTON DRIVE,
SELBYVILLE, DELAWARE 19975
302.436.0808
RUI.NET

 @BRANDYWINEFENWICK



All square footage is approximate & subject to availability.